



# CERAMIC FILTER FOR FM USE

## • LTCA/CV 10.7 Series



The LTCA/CV10.7 series ceramic filter is the chip type ceramic filter for FM use

### FEATURES

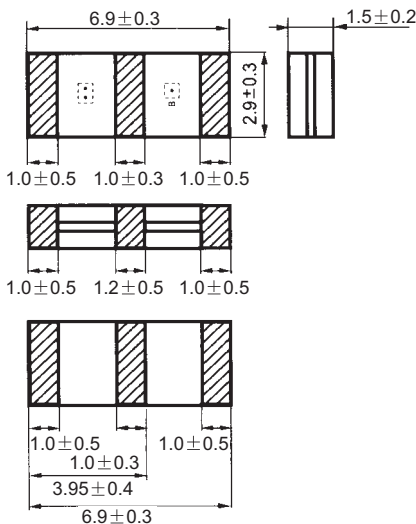
- Low Cost
- FM Use
- Chip Type
- Excellent temperature stability
- High durability

## Electrical Specifications

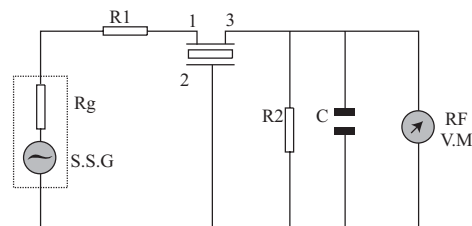
Part Number	3dB Band Width(KHz)	20dB Band Width (KHz)Max	Insert Loss(dB) Max	Spurious Attenuation (9-12MHz)(dB)min
LTC10.7MA5	280 ± 50	650	6.0	30
LTC10.7MS2	230 ± 50	600	6.0	30
LTCV10.7MA5	280 ± 50	590	3.0 ± 2.0	35
LTCV10.7MS2	230 ± 50	510	3.5 ± 2.0	35
LTCV10.7MS3	180 ± 40	470	4.0 ± 2.0	35

\*Input/Output impedance:330Ω

## Mechanical Dimensions(mm)



## Test Circuit For MOS IC



R<sub>g</sub>=R<sub>1</sub>=R<sub>2</sub>=330 Ω C=10pf  
Including Stray Capacitance And Input Capacitance Of RF Voltmeter

### TAIWAN:

HOSONIC ELECTRONIC CO., LTD.  
23-1 LANE 84. CHUN YING ST. SHULIN CHEN.  
TAIPEI 23804. TAIWAN  
WEB SITE:<http://www.hosonic.com.tw>

☎: 886-2-86875200  
☎: 886-2-26816456  
✉: david@hosonic.com.tw

### CHINA:

HANGZHOU HOSONIC ELECTRONIC CO., LTD.  
NO.122 LIANGBO ROAD. LIANGZHU TOWN.  
YUHANG DISTRICT, HANGZHOU, ZHEJIANG, CHINA  
WEB SITE:<http://www.hosonic.com.cn>

☎: (86)-571-88778189  
☎: (86)-571-88778857  
✉: market@hosonic.com.cn

Specifications are subject to change without notice