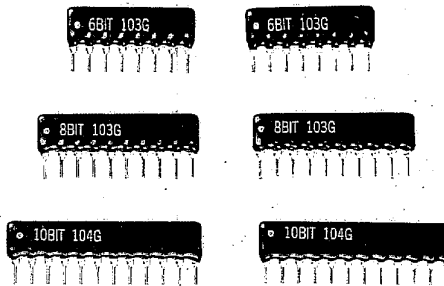
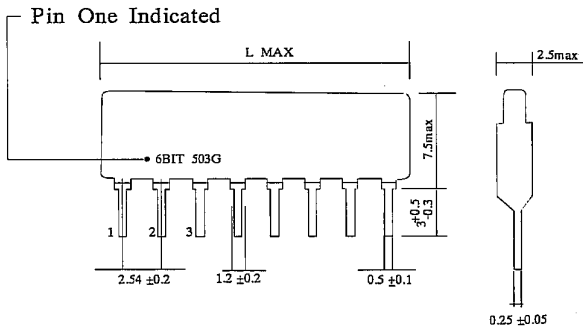


**DIMENSION**



**ELECTRICAL CHARACTERISTICS**

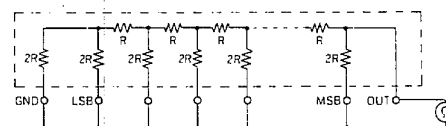
BITS	Number of pins	L max. (mm.)
4	6	15.3
5	7	17.8
6	8	20.4
7	9	22.9
8	10	25.4
9	11	28.0
10	12	30.5

	4BITS	5BITS	6BITS	7BITS	8BITS	9BITS	10BITS
Standard Resistance value	5KOhm — 10KOhm — 25KOhm — 50KOhm — 100KOhm						
Bit errors	± 1/2LSB						
FSA (Max.)	3.12%	1.56%	0.78%	0.39%	0.2%	0.2%	0.2%
Output Impedance Characteristic	± 2%						
Rated Voltage	30mW/element						
Working Voltage	DC 20V Max.						
Operating Temp. Range	-55°C ~ +125°C						

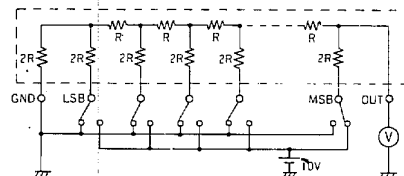
**CIRCUITS DIAGRAM**

Part No.	Circuits	Marking
RAL 4BIT 503G		• 4BIT 503G
RAL 5BIT 503G		• 5BIT 503G
RAL 6BIT 503G		• 6BIT 503G
RAL 7BIT 503G		• 7BIT 503G
RAL 8BIT 503G		• 8BIT 503G
RAL 9BIT 503G		• 9BIT 503G
RAL 10BIT 503G		• 10BIT 503G

**OUTPUT IMPEDANCE TESTING CIRCUIT**



**LINEARITY TESTING CIRCUIT**



**APPLICATION**

